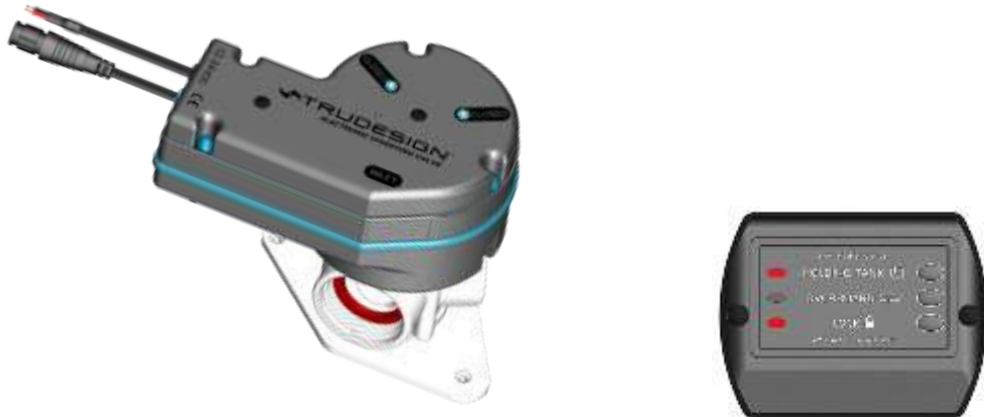


ELECTRONIC DIVERTER VALVE

The TruDesign Electronic Diverter Valve is designed for marine or RV applications where remote “Push Button” diversion of toilet black water to “overboard” or “holding tank” is desired.



The TruDesign Electronic Diverter Valve is moulded from a glass reinforced nylon composite. High strength high-modulus glass fibres impregnated into the nylon provides dramatic strength, stiffness, toughness, and dimensional stability.

PART NUMBER

Part #	Description
91278	Electronic Diverter Valve 12-24 VDC

The Electronic Diverter Valve is supplied with a Control Panel, Spanner, and installation instructions. The Tail (Hose Barb) fittings are purchased separately to accommodate the large variety of plumbing installations.

STANDARDS

The TruDesign Electronic Diverter Valve is certified to comply with: EN 60945: 2002 Maritime navigation and radiocommunication equipment and systems. General requirements. Methods of testing and required test results.



KEY FEATURES

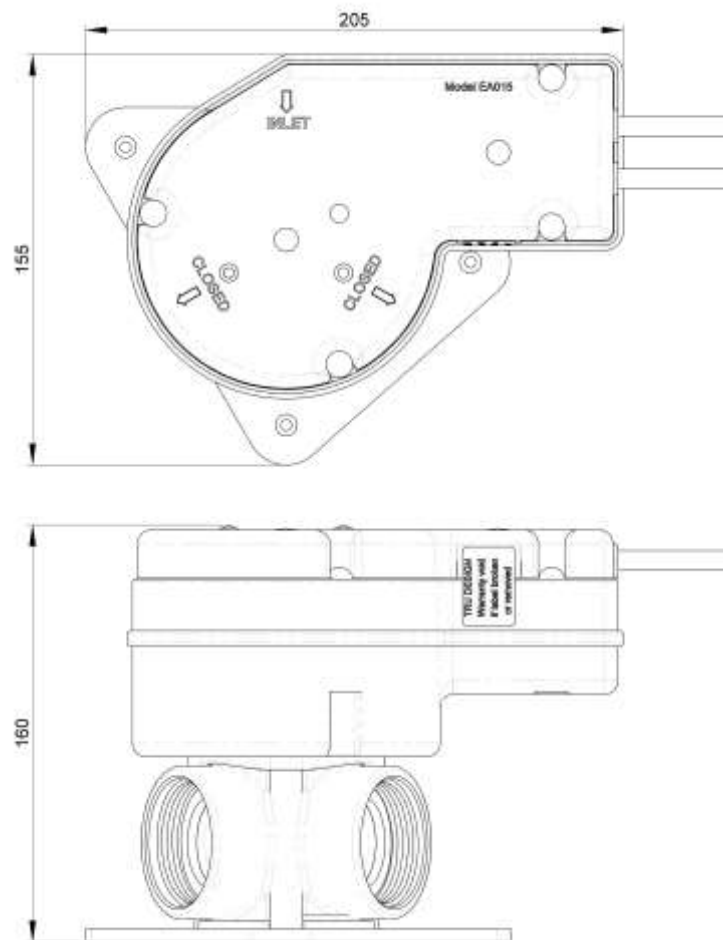
Feature :	Benefit
Holding Tank Lock Feature	Prevents accidental discharge overboard.
Overboard Lock Feature	Prevents accidental overflow of the holding tank.
Control Panel LED indicating lights.	LED's on the control panel clearly denote whether the valve is in the "Holding Tank", "Overboard" or locked position.
Indicating lights on valve	LED's on the valve unit clearly show which valve port is closed.
12- 24 VDC input voltage.	To suit multiple voltage installations
Error diagnostics	The control panel will indicate if the valve is slow to move, is not closed or has low voltage.
IP55 housing rating	Both the Diverter and the control panel are dust and spray proof.
Manufactured from a glass reinforced nylon composite	High strength, black water resistant and light weight.
Easy routing of connection hoses.	With a range of straight, 90° and 120° tails, and two seal options, plumbing in confined spaces and multiple hose sizes is made easy.
Manual override of valve	All valves are supplied with a spanner for use in the unlikely event the valve motor experiences a loss of power and manual operation is needed.
Pressure tested	All valves are factory pressure tested to 15 PSI to ensure sealing and operation.
Silicon seal	Silicon rotor seal ensures smooth movement, excellent seal with good wear resistance.
Serviceable while on the water	Ability to simply disassemble unit and clear any foreign bodies as per instruction manual.
Auto rotate feature	The valve (upon power up) will automatically rotate to the other port and back. This helps to keep the seal moving and lubricated.
Spanner included	Avoids using pipe wrenches that gouge the fitting. Facilitates access in tight places.
Can be wired into 3rd party control systems	Seamless integration as an OEM product.

SPECIFICATIONS

Supply Voltage	12 – 24 VDC
Stand-by Current	50 mA typical
Operating Current	15A Max
Fuse Rating	20A

DIMENSIONS

All dimensions in mm.
All dimensions nominal.



HOSE TAILS – HOSE BARBS

Hose tails are sold separately and come in multiple tail size and bend types - 90°, 120° and straight.



Red and Blue Seals are supplied with the 90° and 120° tails and used to alter the orientation of the tail to allow ease of hose fitting. Sanitation hose being difficult to bend.

THREADED CONNECTOR and PLUG

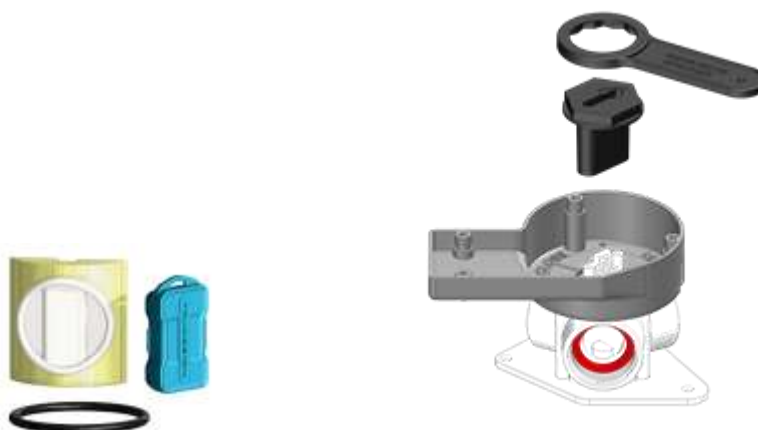
The threaded connector can be used to connect rigid PVC plumbing pipe - available from most hardware resellers.

The plug can be used to block one port when parts of the system are not yet installed, or maintenance is being completed.



SERVICING

The seal kit includes grease, silicon seal and O-ring. The hose tail spanner is used for tightening hose tails and manual operation of the valve in conjunction with the EDV socket.



PARTS

Part Number Black	Part Number White	Tails and Accessories
90249	90251	Aquavalve Tail 19mm 1½" BSP
90542	90538	Aquavalve Tail 19mm 1½" BSP PKG
90260	90262	Aquavalve Tail 25mm 1½" BSP
90543	90539	Aquavalve Tail 25mm 1½" BSP PKG
90280	90283	Aquavalve Tail 32mm 1½" BSP
90544	90540	Aquavalve Tail 32mm 1½" BSP PKG
90288	90294	Aquavalve Tail 38mm 1½" BSP
90545	90541	Aquavalve Tail 38mm 1½" BSP PKG
90466	90259	Aquavalve Tail 90° 25mm 1½" BSP - includes Blue Seal
90293	90299	Aquavalve Tail 90° 38mm 1½" BSP - includes Blue Seal
90465	90258	Aquavalve Tail 120° 25mm 1½" BSP - includes Blue Seal
90297	90298	Aquavalve Tail 120° 38mm 1½" BSP - includes Blue Seal
90916	90461	Nipple Connector Threaded 1½" / 1½" BSP
90917	90546	Nipple Connector Threaded 1½" / 1½" BSP PKG
90918	90237	Plug 1½" BSP
90919	90547	Plug 1½" BSP PKG
	Note	PKG denotes part comes in a plastic bag - packaged.
SERVICE ITEMS		
91279		EDV Control Panel
91280		EDV Main PCA
91281		EDV Sensor PCA (2)
90475		Aquavalve Red Seal (thin)
90536		Aquavalve Red Seal (thin) PKG
90327		Aquavalve Blue Seal (thick)
90537		Aquavalve Blue Seal (thick) PKG
90317		Spanner (Wrench) Aquavalve
90316		Seal Kit Aquavalve Silicone
90976		Lube Case with Silicone
	Note	PKG denotes part comes in a plastic bag - packaged.

The information contained in this information sheet is for general information purposes only. The information is provided by TruDesign™ and while we endeavour to keep the information up to date and correct, we make no representations or warranties of any kind, express or implied, about the completeness, accuracy, reliability, suitability or availability. Any reliance you place on such information is therefore strictly at your own risk.