

## Hose Tails - BSP and NPS



TruDesign Tails are moulded from a glass reinforced nylon composite. High strength, high-modulus glass fibers impregnated into the nylon provides dramatic strength, stiffness, toughness, and dimensional stability. TruDesign Tails eliminate the corrosion and electrical bonding problems associated with metallic fittings. The Tails are designed for twin hose clamps, and do not crush under high load conditions.

### Key Features

Feature :	
Manufactured from a glass reinforced nylon composite	High strength and light weight.
Immune to corrosion and electrolysis	No need to replace check integrity of fitting.
Chemical resistant	Impervious to diesel, petrol and antifouling paints.
UV resistant	Will not break down with ultraviolet light or discolour.
High quality surface finish	Will not discolour with green film as bronze fittings do.
Fits TruDesign Ball Valves BSP and NPS threads	Universal compatibility to other TruDesign fittings.
Large operating temperature range	Suitable for all marine environments, from -40°C to +110°C.

### Installation

For thread sealing see TruDesign Technical information sheet on our web site [www.trudesignplastics.com](http://www.trudesignplastics.com) - for suitable adhesive sealants and or thread tapes.

The connecting thread type are either BSP or NPS and clearly marked on the side of the fitting along with size. The advantage of parallel threads rather than tapered is that there can be maximum engagement between the mating threads providing a stronger connection. Do not over tighten, simply allow the adhesive sealant to provide the seal and orientation of the fitting.

Apply twin hose clamps for a secure hose connection and check tightness regularly.

## Part Numbers BSP

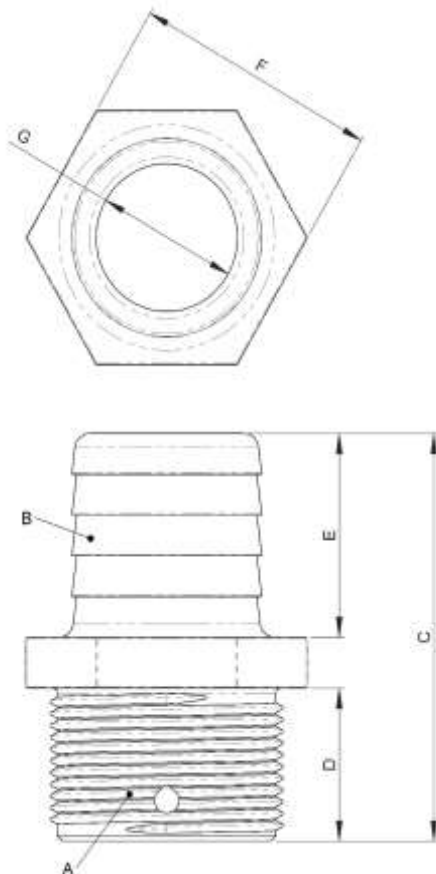
90246	Tail 13mm ½" BSP Long Male Thread
90557	Tail 13mm ½" BSP Long Male Thread PKG
90252	Tail 19mm ¾" BSP Long Male Thread
90558	Tail 19mm ¾" BSP Long Male Thread PKG
90263	Tail 25mm 1" BSP Long Male Thread
90559	Tail 25mm 1" BSP Long Male Thread PKG
90285	Tail 32mm 1¼" BSP Long Male Thread
90560	Tail 32mm 1¼" BSP Long Male Thread PKG
90231	Tail 38mm 1½" BSP Long Male Thread
90561	Tail 38mm 1½" BSP Long Male Thread PKG
90518	Tail 50mm 2" BSP Long Male Thread
90562	Tail 50mm 2" BSP Long Male Thread PKG
91161	Tail 75mm 3" BSP Long Male Thread
90875	Tail Unequal 16mm ½" BSP Long Male Thread
90876	Tail Unequal 16mm ½" BSP Long Male Thread PKG
90879	Tail Unequal 22mm ¾" BSP Long Male Thread
90880	Tail Unequal 22mm ¾" BSP Long Male Thread PKG
90640	Tail Unequal 28mm 1" BSP Long Male Thread
90641	Tail Unequal 28mm 1" BSP Long Male Thread PKG
90530	Tail Unequal 38mm 1¼" BSP Long Male Thread
90564	Tail Unequal 38mm 1¼" BSP Long Male Thread PKG
90284	Tail Unequal 32mm 1½" BSP Long Male Thread
90563	Tail Unequal 32mm 1½" BSP Long Male Thread PKG
91162	Tail Unequal 64mm 3" BSP Long Male Thread
	* PKG denotes product supplied in branded bag

## Part Numbers NPS

90726	Hose Barb ½" x ½" NPS Long Male Thread
90767	Hose Barb ½" x ½" NPS Long Male Thread PKG
90727	Hose Barb ¾" x ¾" NPS Long Male Thread
90768	Hose Barb ¾" x ¾" NPS Long Male Thread PKG
90728	Hose Barb 1" x 1" NPS Long Male Thread
90769	Hose Barb 1" x 1" NPS Long Male Thread PKG
90729	Hose Barb 1¼" x 1¼" NPS Long Male Thread
90770	Hose Barb 1¼" x 1¼" NPS Long Male Thread PKG
90730	Hose Barb 1½" x 1½" NPS Long Male Thread
90771	Hose Barb 1½" x 1½" NPS Long Male Thread PKG
90731	Hose Barb 2" x 2" NPS Long Male Thread
90772	Hose Barb 2" x 2" NPS Long Male Thread PKG
90887	Hose Barb Unequal ⅝" x ½" NPS Long Male Thread
90888	Hose Barb Unequal ⅝" x ½" NPS Long Male Thread PKG
90889	Hose Barb Unequal ⅞" x ¾" NPS Long Male Thread
90890	Hose Barb Unequal ⅞" x ¾" NPS Long Male Thread PKG
90881	Hose Barb Unequal 1⅛" x 1" NPS Long Male Thread
90882	Hose Barb Unequal 1⅛" x 1" NPS Long Male Thread PKG
90885	Hose Barb Unequal 1½" x 1¼" NPS Long Male Thread
90886	Hose Barb Unequal 1½" x 1¼" NPS Long Male Thread PKG
90883	Hose Barb Unequal 1¼" x 1½" NPS Long Male Thread
90884	Hose Barb Unequal 1¼" x 1½" NPS Long Male Thread PKG
91188	Hose Barb Unequal 1½" x 2" NPS Long Male Thread
91189	Hose Barb Unequal 1½" x 2" NPS Long Male Thread PKG
	* PKG denotes product supplied in branded bag

**Dimensions** All dimensions nominal.

<b>A</b>	<b>B</b>		<b>C</b>		<b>D</b>		<b>E</b>		<b>F</b>		<b>G</b>	
Thread Size	Tail Size		Overall Length		Thread Length		Tail Length		Hex Size AF		Minimum Internal Ø	
½"	13mm	½"	63mm	2 1/2"	24mm	1"	31mm	1 2/9"	25mm	1"	9mm	1/3"
¾"	19mm	¾"	63mm	2 1/2"	24mm	1"	31mm	1 2/9"	30mm	1 1/6"	13mm	1/2"
1"	25mm	1"	80mm	3 1/7"	30mm	1 1/6"	40mm	1 4/7"	35mm	1 3/8"	19mm	3/4"
1¼"	32mm	1¼"	80mm	3 1/7"	30mm	1 1/6"	40mm	1 4/7"	44mm	1 3/4"	24mm	1"
1½"	38mm	1½"	80mm	3 1/7"	30mm	1 1/6"	40mm	1 4/7"	50mm	2"	29mm	1 1/7"
2"	50mm	2"	93mm	3 2/3"	30mm	1 1/6"	50mm	2"	62mm	2 4/9"	40mm	1 4/7"
3"	75mm	3"	137mm	5 2/5"	42mm	1 2/3"	80mm	3 1/7"	89mm	3 1/2"	66mm	2 4/7"
½"	16mm	¾"	62mm	2 4/9"	24mm	1"	30mm	1 1/6"	25mm	1"	11mm	3/7"
¾"	22mm	¾"	63mm	2 1/2"	24mm	1"	31mm	1 2/9"	30mm	1 1/6"	15mm	3/5"
1"	28mm	1 1/8"	80mm	3 1/7"	30mm	1 1/6"	40mm	1 4/7"	35mm	1 3/8"	20mm	4/5"
1¼"	38mm	1½"	92mm	3 5/8"	30mm	1 1/6"	50mm	2"	62mm	2 4/9"	29mm	1 1/7"
1½"	32mm	1¼"	80mm	3 1/7"	30mm	1 1/6"	40mm	1 4/7"	50mm	2"	24mm	1"
2"	38mm	1½"	80mm	3 1/7"	30mm	1 1/6"	40mm	1 4/7"	50mm	2"	24mm	1"
3"	64mm	2½"	137mm	5 2/5"	42mm	1 2/3"	80mm	3 1/7"	90mm	3 1/2"	55mm	2 1/6"



The information contained in this information sheet is for general information purposes only. The information is provided by TruDesign™ and while we endeavour to keep the information up to date and correct, we make no representations or warranties of any kind, express or implied, about the completeness, accuracy, reliability, suitability or availability. Any reliance you place on such information is therefore strictly at your